



Introduction

YT connector is specialized in connection of electrical power and control circuit for varieties electrical equipment and especially used in flaw detector and environmental protection equipment. With design of a protective cap on the fixed connector, when free connector is pulled out, the protective cap will automatically close.



Technical Data

Rated Current: Exposure to the diameter ϕ 2.5 to 25A, ϕ 3.2 to 45A

Rated Voltage: 500V

Ambient Temperature: -45~85°C

Relative Humidity: 3% at 40°C

Vibration: 50~500HZ; Accelerate 100m/s²

Shock: Frequency 60~80cycles/minute; Acceleration 250 m/s²

Contact: Exposure to the diameter ϕ 2.5 of 0.001 Ω ; ϕ 3.2 to 0.0005 Ω

Insulation Resistance: > 2000M

Pressure: 2000V

Mechanical Life: >500 Cycles

Part Number Explanation

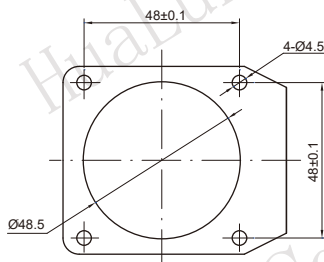
Contact Arrangement	Plug		Receptacle		YT-Series 48-Size J-Pin K-Socket 9-Contact Quantity T-Plug Z-Receptacle
	YT48K9T	YT48J9T	YT48J9Z	YT48K9Z	
					



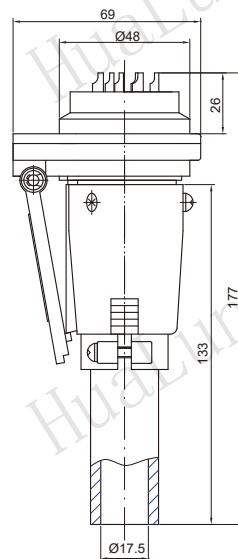
YT Series Contacts Arrangement

YT			
Contacts No.	9	10	15
Contacts arrangement			
Diameter of contacts × Qty	$\phi 3.2 \times 3$ $\phi 2.5 \times 6$	$\phi 3.2 \times 3$ $\phi 2.5 \times 7$	$\phi 2 \times 2$ $\phi 1.5 \times 13$
Rated voltage	500V	500V	500V
Withstand voltage	2000V	2000V	2000V

Installation dimensions



Dimensions



SHANGHAI HUALUN INSTRUMENTS & ELECTRONICS CO., LTD.

SALES & MARKETING DEPARTMENT

ADD: Rm3409, Tower2, Kerry Everbright City, West Tianmu Rd218, Shanghai

TEL: 86-21-63178300 63178586 63177566 FAX: 86-21-63178083

E-MAIL: sales@hualun.sh.cn, sales@hualunconnector.com P.C.: 200070